

## Features

- 4.2L naturally aspirated natural gas industrial engine with cooling package
- Integral oil cooler
- Single spin-on oil filter
- 30 kW Stamford generator – Model S0L2-P41
- Engine/generator steel base with fork pockets (no enclosure)
- Altronic CDI ignition
- GAC 5131 governor
- GAC throttle body
- Oil pressure and coolant temperature switch gauges
- Key switch and Murphy Tattletale
- 12V starter
- 12V/60A alternator
- Panelsource generator control panel
  - \* Voltmeter (with voltage selector switch to monitor each leg)
  - \* Ammeter
  - \* Frequency meter
  - \* Hour meter

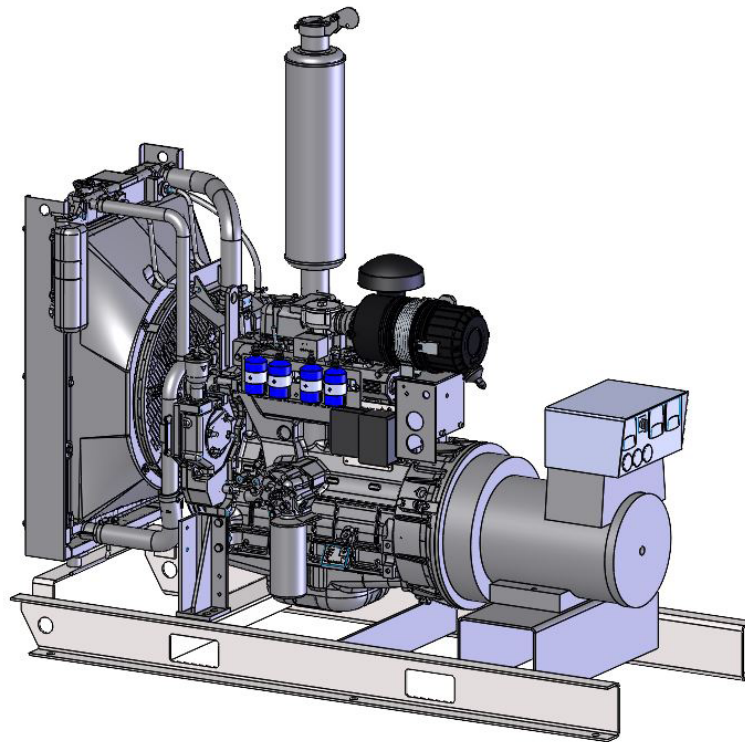


Image shown is for illustration purposes only and may not be an exact representation of the final product.